



EVENTS OVERVIEW 2022-2023

Follow us on Twitter
[@MasefieldCP](https://twitter.com/MasefieldCP)

You will be notified throughout the year of any additional events

[Dates may change but you will be notified in advance]

Class Assemblies (all at 2.45pm)

28th Sept – Y5
12th Oct – Harvest* -
additional information will be
sent
16th Nov – Y3I
7th Dec – Y4

25th Jan – Y3J
1st Feb – Y2
22nd March – Y1

26th April - Reception
21st July – Y6 leavers

Knowledge Days (Year 1-6) Stay and Play (EYFS)

Parents are invited into class at 3.00 so that we can show you everything that we remember from our previous learning.

- Wednesday 9th November 3.00pm
- Wednesday 18th January 3.00pm
- Wednesday 15th March 3.00pm
- Wednesday 3rd May 3.00pm

Art showcase

Come into class and look at our wonderful artwork.

Wednesday 19th October
3.00pm

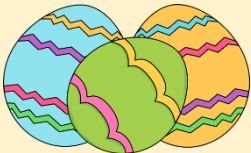
Wednesday 28th June
3.00pm



Easter Bingo

Non uniform – egg
donations Wednesday 29th
March

Wednesday 29th March
3.30pm & 5.00pm



Christmas

- Friday 25th November – non uniform day – Christmas fair donations: sweets/small prizes
- Thursday 1st December - non uniform day – Christmas fair donations: chocolate



- Friday 9th December - Christmas fair
- Monday 12th December – EYFS Nativity – 10.00am
- Tuesday 13th December – EYFS Nativity – 2.00pm
- Tuesday 13th December – KS1 play - 5.00pm
- Wednesday 14th December – KS1 play - 2.00pm
- Thursday 15th December – KS2 Carol Concert – 5.00pm*
- Monday 19th December - Christmas jumper day
- Monday 19th December – Christmas dinner & Elf Run
- Tuesday 20th December - Whole School Trip to Pantomime!
- Thursday 22nd December – School closes 1.30pm

Parent conferences

- Week beginning 14th November
- Week beginning 6th March
- Wednesday 19th July (optional)

Sports Day

We plan to hold our sports day on the following days. In the event of bad weather we will look at the weather forecast and schedule a new date.

Monday 12th June 10.00am - EYFS

Tuesday 13th June 9.30am – KS1

Tuesday 13th June 1.00pm – KS2

Charity Days

#HelloYellow – World Mental Health Day – Monday 10th October

Children In Need – Friday 18th November

Rock Kidz (Dress as a Rockstar) – Wednesday 30th November (part of kindness week)

Comic Relief – Friday 17th March

Aspirations/Individuality Day – Friday 21st April

Macmillan Day & Bake Off – Friday 23rd June

End of Year Events

Monday 17th July – Meet the Teacher 3.30 and 4.00.

Tuesday 18th July – Transition Day

Thursday 20th July – EY & KS1 presentation afternoon 2.00pm, KS2 presentation evening 6pm (invite only)

Friday 21st July – Year 6 Leavers Assembly at 9.00am

Friday 21st July – school closes for summer at 1.30pm



You will be notified throughout the year of any additional events

Phonic workshops

Parents are invited to find out more about Phonics at Masefield. Your child may attend this session with you.

- Tuesday 4th October – Nursery, Reception (3.30pm)
- Wednesday 5th October – Key Stage 1 (3.30pm)

Reading workshops

Parents are invited to find out more about Reading at Masefield. Your child may attend this session with you.

- Tuesday 8th November – Nursery, Reception & Key Stage 1 (3.30pm)
- Wednesday 9th November – Key Stage 2 (3.30pm)

Maths workshops

Parents are invited to find out more about Maths at Masefield. Your child may attend this session with you.

- Tuesday 17th January – Nursery, Reception & Key Stage 1
- Wednesday 18th January – Key Stage 2

Online Safety workshops

Parents are invited to find out more about Online Safety at Masefield. Your child may attend this session with you.

- Tuesday 28th February – All Year Groups

Parent Forum & SEN Support

Throughout the year there will be additional events;

- *Parent Forums are an opportunity to grab a drink with staff in school and discuss improvements we can make. Each session will have a different focus.*
- *SEN Coffee Events: If you have a child with special educational needs, you are invited to come into school for our coffee morning event. During this time, you will have a chance to chat to our SENCO & other parents about any concerns you may have.*